



# Newsletter

NASSAU-SUFFOLK HORSEMEN'S ASSOCIATION, INC.

## Right-to-Ride Legislation

**O**n February 2, 2005 Representative George Radanovich (CA-R) introduce HR 586, the Right-to-Ride Livestock on Federal Lands Act of 2005. The leadership of the Back Country Horsemen of America has worked long and hard for the passage of legislation recognizing the legitimate use of pack and saddle stock on public lands.

The stated purpose of this bill is to preserve the use and access of pack and saddle stock animals on public lands, including wilderness areas, national monuments, and other specifically designated areas, administered by the National Park Service, the Bureau of Land Management, the United States Fish and Wildlife Service, or the Forest Service where there is a historical tradition of such use, and for other purposes.

It says that, as a general rule, all trails, routes, and areas used by such animals shall remain open and accessible for such use. A reduction in the use and access of pack and saddle stock animals on such lands could take place only after complying with the full review process required under the National Environmental Policy Act of 1969.

The Secretaries of the Interior and Agriculture are to issue final rules to define the meaning of a historical tradition of use of pack and saddle stock animals on Federal lands.

HR 586 makes amendments to the

*Continued on Page 6*

## Muttontown Horsemen's Association Horses In Art

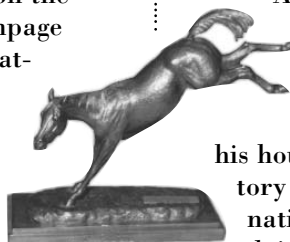
*By Ginny Uhlinger*

**S**unday, May 7th was the perfect spring evening to be on the patio at The Old Bethpage Village Restoration celebrating the life of Marilyn Newmark Meiselman, artist, horsewoman and friend.

The 175 people who attended were greeted by a wine-tasting provided by Chris Zoller representing Vineyard 48, Joanne Braxl of Race Lane Liquors, and Skurnik Wines. After a convivial 45 minutes of meeting and greeting each other, guests assembled in the auditorium where Co-chairperson Ginny Uhlinger thanked the many sponsors: Nassau-Suffolk Horsemen's Association, Old Westbury Horseman's Foundation, Smithtown Hunt, the Adikes Hill Foundation, Mrs. Irene Demetriou, Mr. and Mrs. Jack Miles, Mr. and Mrs. Paul Brown, and Superior Rent -All of Syosset. Bill Uhlinger spoke eloquently about Marilyn's career in art, her founding of the NSHA with husband Len, and their lifelong involvement with horses. Kathleen Kleinman, President of MHA, Ginny and Bill then presented Marilyn with a Certificate of Appreciation on behalf of The MHA and gift; an exquisite gold snaffle necklace.

Kathleen then introduced Dr. Rico Franses from Pratt University. Dr.

Franses is an authority in Byzantine Art and will be teaching for the next three years at the American University in Lebanon. We will be sorry to lose him because



his hour-long lecture on the history of horses in art was fascinating. Dr. Franses will be doing one more walking tour and a different lecture at the Metropolitan Museum of Art in New York City on this subject before he leaves. Anyone who went to the last one had a great time. Please visit the MHA website [www.muttontown-horsemen.com](http://www.muttontown-horsemen.com) for more information on the walking tour.

By the end of the lecture, our efficient catering crew, led by Holly

*Continued on Page 2*

### INSIDE

tk	2-3
tk	5
tk	6-7
tk	8
Calendar/Classifieds	9

Nassau-Suffolk Horsemen's Association  
2022 Grove Street, Baldwin, NY 11510-2631  
Tel (516) 868-9600 • Fax (516) 623-8404  
Email: [nshainfo@aol.com](mailto:nshainfo@aol.com) • [www.nshaonline.org](http://www.nshaonline.org)

# Nassau County Mounted Police Officer Michael Clare Retires

By Patty Lauth

The Nassau County Police Department Mounted Unit celebrated the retirement of Michael Clare on April 11, after 31 years of service as a Police Officer. The event was held at the Fox Hollow in Syosset and it seemed that all who attended had great memories and stories to share about the honoree. Mike Clare is one of the original members of the NCPD Mounted Unit which was formed by the late Commissioner Samuel Rozzi in 1978. Mike Clare was the training officer in the unit in charge of training new riders and evaluating and training new mounts but also spent many years as a mounted patrol officer. He was honored by his fellow officers from the Police Department and Mounted Unit as well as by many other horsemen, friends and family, some of whom traveled from Canada, Boston, Philadelphia, Virginia, Florida and Washington, DC. Mike has been in demand by other police mounted units around the country and has been involved in numerous training sessions and competitions concentrating on making better riders and mounts. It was obvious to all who worked with him how he enjoyed his work and took great pride in calling himself a working mounted officer. He is always happiest with a leg on either side of his horse. The unit is going to miss his pres-

ence but he has surely earned a much deserved retirement. As we say farewell to our Senior Man, we hope he finds many happy trails in his future.

Bill and Ginnie Uhlinger and President Frank Bradford of the Nassau/Suffolk Horsemen's Association were on hand to present Mike with a certificate of appreciation. 🐾



## Horses in Art...

*Continued from Page 1*

Kleinman, had set up the gourmet buffet from Fairway. No one had long to wait in line because she had 2 buffets in the dining room and one on the patio. And of course, the wine and beer continued to flow. Since the weather cooperated and we were comfortable sitting outside in a light jacket or sweater, guests had a choice of dining indoors or "al fresco". During dinner guests could bid on the silent auction items displayed and arranged by Wendy Slavsky and Barbara Palm. Some of our guests had donated auction



items. Todd Harvey donated a flight to Block Island. Janet Ferrato, a retired art teacher, donated a horse watercolor that she had done herself. Pat Olds donated a horse pastel. The list goes on and on. Since Wendy had arranged for so many items, all the winners went home happy!

During the festivities guests had time to admire over a dozen of Marilyn's sculptures which Bill had lovingly and carefully transported to the exhibit hall of the Visitor Center. Most people have never seen so much of



Marilyn's work all together, just a small part of her own collection. Her sculpture is in private collections and museums around the world, so it was a rare opportunity indeed. We were able to appreciate her versatility and artistry as we were treated to racing and hunting horses with riders, foals, thoroughbreds, draft horses, foxes and hounds.

Many friends and guests enjoyed sitting in the dining room and chatting as the MHA committee cleaned up and seemed reluctant to leave. It was a tribute to the success and ambience of the evening.

For those who missed it - too bad - this was a once in a lifetime event! 🐾

# The Road to Washington, D.C.

By CPL Virginia Uhlinger, ADC

Your Rough Rider Cavalry Troop has already distinguished itself several times by parading in 'da best ciddy in da woild' - New York, New York!

So when the invitation came from the parade committee of the second best city in the world, our nation's capitol, we could not miss this once in a lifetime opportunity.

After a 6 A.M. stable call at the Prince George Equestrian Center, the troop caravaned to the National Mall where we off-loaded our horses and ourselves. Security is tight, as you would expect, in Washington these days. Police are nervous about trailers and vans. So, we had to move ours to the end of the route, about 4 blocks away, walk back, and wait 3 hours on the mall in the heat of the day until the parade began at noon.

The Washington D.C. National Memorial Day Parade consisted of 165 units, but only 3 were cavalry. On that 100 degree day we were blessed that we stepped off early as unit 50. The Valley Forge Military School with its lancer hats and band, looked and sounded like something English out of the Victorian era. There was an "Andrew Jackson" look a like in costume who rode a gray horse. Did I mention this gray horse had a diaper on it? And Jackson had to be led on a lead line since he obviously had no riding experience. Don't know what was up with all that. There were Buffalo Soldiers of the 9th and 10th U.S. Cavalry and cowboys with a Longhorn steer. "Mr. and Mrs. Abe Lincoln" rode in a carriage. And there were the Rough Riders. Seven Rough Riders were mounted, 13 dismounted from Long Island and West Virginia; and we had ten more from Tampa, Florida.

We had all been pretty anxious about the hours of waiting on The Mall, something we usually don't do before stepping off in a parade. But, there was plenty of shade under the trees and the dismounted troopers took turns holding our horses that were more than content to graze away the hours on "Capitol grass."

Some troopers were relaxed enough to picnic on the mall with family who attended to share the experience.

There were parade units of soldiers back from the war, and some ready to go. Our own veterans included Trooper James Knowles, recently returned from duty in Afghanistan. He was on hand to sharpen the marching skills of our dismounted troopers as was Troop Chaplain George Pucchiarelli, recently retired as the 13th Chaplain of the Marine Corps and LTC.

Frank Surdu, USA, Ret., now Trooper Frank. 2LT McCann (U.S. Army) and Color SGT Strong (U.S. Navy) completed our contingent of Vets on this trip. This is the first time we marched with a regimental banner - blue and gold - the cavalry colors after all. This was carried and flanked by our junior troopers.

The parade was 1.3 miles on Constitution Avenue. At the conclusion the Horse Troop went "column right" and threaded its way about seven blocks through Washington traffic to get to the horse trailers. Fortunately our horses are used to all this, so being tied up to the side of the trailer, being un-tacked on a cobblestone side walk, with 4 lane traffic whizzing by, and pedestrians trying to pet them, was no sweat.

Our Troop had driven down Saturday, exercised the horses Sunday morning, and paraded Monday. As you know, if you have traveled with horses and done rough board, you don't have much time to sightsee. And we didn't. We did have several great dinners with each other, the opportunity to ride our horses on the National Mall in view of the Capitol and Washington Monument, and to be in a wonderful parade attended by about 100,000 happy Americans. As we



Members of the Nassau-Suffolk Horsemen's Association from Long Island, N.Y., march in the National Memorial Day Parade down Constitution Avenue in Washington, May 29. Photo by Steven Donald Smith (Click photo for screen-resolution image);high-resolution image available.

parted ways on Tuesday morning, we knew we'd all see each other again at the July 4th celebrations and again at the Troop's Regimental Dinner here on Long Island in September.

All in all, about 30 represented the Nassau Suffolk Horseman's Association. These Rough Riders from Florida, West Virginia and Long Island upheld the honor of the Regiment and the NSHA. You can be very proud of them all. 🐾

## WILLOW ROCK FARM

Is a Full-Service Provider of Construction & Maintenance Services

### Machines for Hire:

- Land Clearing, Grading
- Dry Wells, Trenching
- Water/Sewer Lines
- Fencing/Post Holes
- Yard Hydrants (Freeze Proof)
- Auger 6" 9" 12"++
- Concrete Work
- Cement Saw
- Grading Rake
- Jack Hammer
- Jumbo Bucket
- And Much, Much More!
- Back Hoe
- Trencher
- Tamper
- Forks

Stefan: 582-3307

KERRIANN FLANAGAN BROSKY  
(631) 271-9676

Portraits by Kerriann

Animal Portraits

FAX (631) 271-6417  
E-mail Kbrosky@aol.com

73 Sammis Street  
Huntington, NY 11743

# Straight From The Horse's Mouth

By Gregory A. Beroza, DACVS & DABVP

When horses bite into life, they do it in the way that was determined by their evolution as grazing animals. Their 12 front teeth are designed for grabbing and/or biting, their 24 rear molars for grinding. The condition of their teeth affects the animal's overall health more than owners and trainers realize.

Just as a horse needs four balanced feet, he must also have a well-balanced mouth to perform properly.

Horsemen are acquainted with the old saying, "No foot, no horse," but, while they can easily see the condition of the feet and legs, the inside of the horse's mouth is not so easily accessible.

The horse's teeth change as he ages; the upper teeth dropping down from within his sinuses and the lower ones erupting from his jaw bone at an estimated rate of 1/16 inch per year. At first, the grinding surface of the baby teeth of a young horse meet on their flat surfaces; while those of an older improperly managed horse may eventually wear to a 45 degree occlusal angle. As a grazing animal, normally the horse is constantly wearing down his teeth. His teeth may eventually wear down to an abnormal angle, because the upper row sits slightly wider in his mouth than the lower row; thereby placing uneven abnormal stress on the horse's jaw and TM (temporal-mandibular) joint.

If the horse cannot process his food properly, his digestion is also negatively affected. Whole oats, for example, may be swallowed without even being ground. This is comparable to a person swallowing his food whole, without chewing it. The best nutrition is useless if the horse cannot digest it effectively. In turn, the horse may lose weight and perform poorly. He may show signs of

unthriftiness, digestive trouble, colic or possibly even ulcers. Properly ground food is essential to the optimal digestion of a horse's feed.

Symptoms of tooth problems may be evidenced in many different ways. If the teeth are not in proper alignment, are broken, are impacted or infected, a horse might veer out because of



pain, shake his head, bite his tongue or the inside of his cheek, fight the bit or generally not be training up to par. One racing thoroughbred, that I recently treated at Belmont Park for trainer David Duggan, had a tooth growing irregularly into his cheek, thereby causing an ulcer. After the tooth problem was corrected, there was a marked improvement in the horse's performance. David stated that, "proper dentistry made my job of training easier. Before the tooth problem was fixed, my horse was uncontrollable and would not have made it to the races. Now there is no longer a problem with his performance." Additionally, I also examined and floated 5 recently claimed thoroughbred racehorses for Robert Klesaris at Belmont Park. Both he and his assistant, Raul Ruiz, noted that the very next day, 2 of those horses had "a remarkable improvement in their training performance".

In the show world, Jagger Topping, of Swan Creek Farm in Bridgehampton, observed that, for his large population of horses, our power floating dentistry went even more smoothly and quickly than the previously conventional hand-floating methods he employed. Ann Aspinol, of Topping Riding Club in

Sagaponack, had "no doubt" in her mind, that over the past 5 years we have been taking care of her horses' teeth, they now look better and maintain their weight better than in previous years. Even her boarders have recognized a positive difference. Lieutenant Nicholas Pandolfo, commanding officer of the Nassau County Mounted Unit, has observed after several years of our improved dental care

that he has been able to appropriately cut back on his feed bill, because his horses are now eating well and doing better.

Ideally, performance and pleasure horses should have their teeth examined and floated twice a year. According to New York State law, this should be done by a licensed veterinarian. Although some lay people have experience and training in this area, a qualified, knowledgeable veterinarian will provide the best opinion and the best job. The veterinarian should examine the entire mouth, looking for and correcting any potential problems (and, yes, horses do get cavities, although they are not as significant a problem as they are in people). Floating is the procedure in which sharp enamel points or rough edges are removed with a dental file and it is an essential part of routine horse care.

The method I employ is power >>

floating; using power equipment rather than hand tools. The horse is sedated (something a lay person cannot do), and the horse's mouth is propped open with a speculum. This enables the veterinarian to reach far back into the mouth, where horses, and especially older horses, may have sharp "hooks." A combination diamond and carbide bit is used, which does not injure the soft tissues of the horse's mouth. With power equipment, I can get equally balanced results in all corners of the horse's mouth. Trainers and owners should be aware that after sedation, although horses can go back to work 1 hour later, there may be show rules governing proper withdrawal of the tranquilizer used, prior to showing. In race-horses it is four days.

Laws regarding professional care of the horse's teeth vary from state to state; there is no national code. Although veterinarians are universally required to have licenses, not all equine dentists have state licenses. Consequently, there is no uniform training code and if any damage is done to the horse, the owner has little course of legal action.

My eight years of experience with power floating have proven to me that it is the best method of routine dental care. Basic regular dental maintenance, complete routine oral examination and early problem correction help eliminate the risk of serious future trouble, such as cracked teeth, impacted teeth, TM joint problems or infection. The well being and careers of our prized horses are at stake.


*Editorial note: Dr. Gregory A. Beroza is Chief of Staff & Surgeon at the Long Island Equine Medical Center in Huntington, Long Island, also with a practice at Belmont Park. He is double board certified in both equine surgery and equine practice and he has practiced at Belmont Park for 25 years. For more information about tooth care and other areas of equine health, call (631) 427-2213, see the HorseDoc.com website or e-mail HorseDoc@HorseDoc.com.*

**Mindy Mylett**  
Dog Trainer  
References Available




516-489-4555

Puppies & Studs  
Short & Sweet



**THEE ROCK**  
Jack Russell Terriers

105 Schultz Rd.      Marlene De Vinney  
Manorville, N.Y. 11949      631-727-0809

Janice McGivney      Australian & German Shepherds  
Rough Collies & Borzoi



**McG SHEPHERDS PLUS**  
Where The "Plus" Is For Excellence

99 Bellport Avenue, Medford, NY 11763 • 631-345-5619 • mcgsheps@optonline.net

**LONG ISLAND HORSE PROPERTIES**



**PAT KMIOTEK**  
Licensed Sales Agent

Horse Property Specialist  
[www.lihorseproperties.com](http://www.lihorseproperties.com)  
Pat@lihorseproperties.com

LIHP Office: 631-979-2965  
Home office: 631-584-6455  
Cell: 631-334-0802

NSHA's is requesting your support for the Nassau County 4-H Summer Horse Camp Scholarship program. The scholarship was made available last summer for Twenty Two wonderful children from Nassau and Suffolk Counties. The children were all awarded a one week scholarships to attend the Nassau County Dorothy P Flint 4-H Equestrian Camp in Riverhead, New York.

For the summer of 2006 we have set the goal of awarding at least twenty scholarships to children from both Nassau and Suffolk Counties and would love to award a scholarship to all that apply. The process of selecting the children will be the same as last years essay contest. When the 4-H campers register for regular camp they will be allowed to compete for a horse camp scholarship. The camper will complete a short form and write a brief essay describing why they wish to participate in the horse camp. Winners will be selected by the NSHA Board of Directors based on the content of the essays that express the most sincere desire to participate in the program. We also give higher consideration to campers that do not have prior ridding experience allowing more scholarship recipients to experience the joy of riding for the first time and introduce a new generation to the equestrian sport.

NSHA and Smithtown Hunt are committed to sponsoring six or more scholarships each for the 2006 camp season. Last years donors included the following organizations individuals that supported two or more scholarships each.

- |                                 |   |
|---------------------------------|---|
| <b>NSHA</b>                     | <b>Smithtown Hunt</b>                     |
| <b>Old Field Farm</b>           | <b>Old Westbury Horsemen's Foundation</b> |
| <b>Adikes Family Foundation</b> | <b>Thomas Gumbreck</b>                    |

Your tax deductible contribution of only \$270 Made payable to the NSHA Scholarship Fund will allow us to award two children one week horse camp scholarships this summer. A donation of \$540 will allow four children and \$810 six children to experience horse camp.

We look forward to your anticipated support for this worthwhile program. It's rare when we can achieve so much for so little. Individual donations of any amount are gratefully accepted.

## Right-to-Ride...

*Continued from Page 1*

laws regarding other public lands as follows: (1) the Federal Land Policy and Management Act of 1976, with respect to Bureau of Land Management lands; (2) the National Wildlife Refuge System Administration Act of 1966, with respect to National Wildlife Refuge System lands; and (3) the Forest and Rangeland Renewable Resources Planning Act of 1974, with respect to National Forest System lands.

Horsemen across the country welcome the introduction of HR 586 in Congress. But it has a long way to go before becoming law. This bill gives us the opportunity to express our support for equestrian use of public lands to our representatives in Washington. A similar bill, HR 2966, was introduced by Mr. Radanovich in 2003. Despite garnering twenty-one co-sponsors HR 2966 died in the Committee on Energy and Natural Resources. If the Right-to-Ride bill is to become law in the 109th Congress, a wave of popular support must carry it through the House Resources and House Agriculture Committees as well as the US Senate.

Larry Zauberis, BCH Colorado  
11374 US Hwy 550  
Durango, Colorado 81303  
(970) 247-3231

Here is the Right to Ride Bill that was just introduced in this session of Congress. Need the same bill introduced in the Senate. Really would help if we could get a Republican and Democratic Senator to be primary sponsors.

### **Right-to-Ride Livestock on Federal Lands Act of 2005 (Introduced in House)**

HR 586 IH

109th CONGRESS  
1st Session  
**H. R. 586**

To preserve the use and access of pack and saddle stock animals on public lands, including wilderness areas, national monuments, and other specifically designated areas, administered by the National Park Service, the Bureau of Land Management, the United States Fish and Wildlife Service, or the Forest Service where there is a historical tradition of such use, and for other purposes.

#### **IN THE HOUSE OF REPRESENTATIVES**

**February 2, 2005**

Mr. RADANOVICH introduced the following bill; which was

referred to the Committee on Resources, and in addition to the Committee on Agriculture, for a period to be subsequently determined by the Speaker, in each case for consideration of such provisions as fall within the jurisdiction of the committee concerned

#### **A BILL**

To preserve the use and access of pack and saddle stock animals on public lands, including wilderness areas, national monuments, and other specifically designated areas, administered by the National Park Service, the Bureau of Land Management, the United States Fish and Wildlife Service, or the Forest Service where there is a historical tradition of such use, and for other purposes.

*Be it enacted by the Senate and House of Representatives of the United States of America in Congress assembled,*

#### **SECTION 1. SHORT TITLE.**

This Act may be cited as the Right -to-Ride Livestock on Federal Lands Act of 2005'.

#### **SEC. 2. USE AND ACCESS OF PACK AND SADDLE ANIMALS ON PUBLIC LANDS.**

(a) National Park System Lands- Section 12 of Public Law 91-383 (16 U.S.C. 1a-7) is amended by adding at the end the following new subsection:

(c) Use and Access of Pack and Saddle Animals-

(1) GENERAL RULE- The Secretary of the Interior shall provide for the management of National Park System lands to preserve and facilitate the continued use and access of pack and saddle stock animals on such lands, including wilderness areas, national monuments, and other specifically designated areas, where there is a historical tradition of such use. As a general rule, all trails, routes, and areas used by pack and saddle stock shall remain open and accessible for such use. The Secretary may implement a proposed reduction in the use and access of pack and saddle stock animals on such lands only after complying with the full review process required under the National Environmental Policy Act of 1969 (42 U.S.C. 4321 et seq.).

(2) RULES OF CONSTRUCTION- Nothing in paragraph (1) shall be construed—

^ (A) to authorize the Secretary to refuse to issue a permit for a new use of pack and saddle stock animals, including use by a commercial outfitter or guide, without complying with applicable resource management plans and planning processes required under this Act or any other provision of law;

^ (B) to limit the authority of the Secretary to impose a temporary emergency closure of a trail, route, or area to pack and saddle stock animals or issue special permits; or

»»

“(C) to create a preference for one recreational use for any unit of the National Park System, without consideration of the stated purpose of the unit.”

(b) Bureau of Land Management Lands- Section 302 of the Federal Land Policy and Management Act of 1976 (43 U.S.C. 1732) is amended by adding at the end the following new subsection:

“(e) Use and Access of Pack and Saddle Animals-

“(1) GENERAL RULE- The Secretary shall provide for the management of public lands to preserve and facilitate the continued use and access of pack and saddle stock animals on such lands, including wilderness areas, national monuments, and other specifically designated areas, where there is a historical tradition of such use. As a general rule, all trails, routes, and areas used by pack and saddle stock shall remain open and accessible for such use. The Secretary may implement a proposed reduction in the use and access of pack and saddle stock animals on such lands only after complying with the full review process required under the National Environmental Policy Act of 1969 (42 U.S.C. 4321 et seq.).

“(2) RULES OF CONSTRUCTION- Nothing in paragraph (1) shall be construed—

“(A) to authorize the Secretary to refuse to issue a permit for a new use of pack and saddle stock animals, including use by a commercial outfitter or guide, without complying with applicable resource management plans and planning processes required under this Act or any other provision of law;

“(B) to limit the authority of the Secretary to impose a temporary emergency closure of a trail, route, or area to pack and saddle stock animals or issue special permits; or

“(C) to create a preference for one recreational use for any area of the public lands, without consideration of the stated purpose of the area.”

(c) National Wildlife Refuge System Lands- Section 4(d) of the National Wildlife Refuge System Administration Act of 1966 (16 U.S.C. 668dd(d)) is amended by adding at the end the following new paragraph:

“(5)(A) The Secretary shall provide for the management of System lands to preserve and facilitate the continued use and access of pack and saddle stock animals on such lands, including wilderness areas, national monuments, and other specifically designated areas, where there is a historical tradition of such use. As a general rule, all trails, routes, and areas used by pack and saddle stock shall remain open and accessible for such use. The Secretary may implement a proposed reduction in the use and access of pack and saddle stock animals on such lands only after complying with the full review process required under the National Environmental Policy Act of 1969 (42 U.S.C. 4321 et seq.).

“(B) Nothing in subparagraph (A) shall be construed—

“(i) to authorize the Secretary to refuse to issue a permit for a new use of pack and saddle stock animals, including use by a commercial outfitter or guide, without complying with applicable resource management plans and planning processes required under this Act or any other provision of law;

“(ii) to limit the authority of the Secretary to impose a temporary emergency closure of a trail, route, or area to pack and saddle stock animals or issue special permits; or

“(iii) to create a preference for one recreational use for any unit of the System, without consideration of the stated purpose of the unit.”

(d) National Forest System Lands- Section 15 of the Forest and Rangeland Renewable Resources Planning Act of 1974 (16 U.S.C. 1613) is amended—

(1) by inserting “(a)” before “Regulations”; and

(2) by adding at the end the following new subsection:

“(b) Use and Access of Pack and Saddle Animals-

“(1) GENERAL RULE- The Secretary shall provide for the management of National Forest System lands to preserve and facilitate the continued use and access of pack and saddle stock animals on such lands, including wilderness areas, national monuments, and other specifically designated areas, where there is a historical tradition of such use. As a general rule, all trails, routes, and areas used by pack and saddle stock shall remain open and accessible for such use. The Secretary may implement a proposed reduction in the use and access of pack and saddle stock animals on such lands only after complying with the full review process required under the National Environmental Policy Act of 1969 (42 U.S.C. 4321 et seq.).

“(2) RULES OF CONSTRUCTION- Nothing in paragraph (1) shall be construed—

“(A) to authorize the Secretary to refuse to issue a permit for a new use of pack and saddle stock animals, including use by a commercial outfitter or guide, without complying with applicable resource management plans and planning processes required under this Act or any other provision of law;

“(B) to limit the authority of the Secretary to impose a temporary emergency closure of a trail, route, or area to pack and saddle stock animals or issue special permits; or

“(C) to create a preference for one recreational use for any unit of the National Forest System, without consideration of the stated purpose of the unit.”

(e) Issuance of Rules- Not later than 120 days after the date of the enactment of this Act, the Secretary of the Interior and the Secretary of Agriculture shall issue final rules to define the meaning of a historical tradition of use of pack and saddle stock animals on Federal lands for purposes of the amendments made by this section.



Nassau Suffolk Horseman's  
 Association  
 and  
 Muttontown Horseman's  
 Association's  
**ANNUAL**



[www.nshaonline.org](http://www.nshaonline.org)

**OPEN HOUSE**  
**TRAIL RIDE/WALK**  
 &  
**EXHIBITION**

*Free Pony  
 rides  
 by  
 Calumet  
 11-2pm*

*Free  
 Riding  
 Lessons  
 by  
 Sweet Hills  
 Stables  
 11-2pm*

AT  
**MUTTONTOWN PRESERVE**  
**SEPTEMBER 24, 2006**  
**9:30AM TO 3:00PM**

PERFORMANCE BY  
**IHA'S**

**MOUNTED DRILL TEAM**

**DEMONSTRATIONS ON**

**DRESSAGE - LORAIN BURKE**

**HORSEMANSHIP - SONNY GARGUILO**

**DRIVING - SAM ULIANO**

**WESTERN PLEASURE BY**

**CHRISTIAN FELLOWSHIP RANCH**

**DOG AGILITY DEMONSTRATIONS**

**BY NORTH SHORE ANIMAL LEAGUE**

**AND MORE**

*Free!!!  
 Trail Ride*

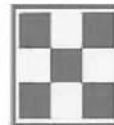
*Free!!!  
 Lunch*

Rent a trail horse call Sweet Hills Stables - 631-351-9168

SPONSORED BY



Hicksville Agway/Chestnut Vale Feed



Terry Gallogly  
 631-902-5959

## CLASSIFIEDS

### Members Only! Newsletter Ads

Please email your ad to [frankdbradford@aol.com](mailto:frankdbradford@aol.com)  
or mail to:

NSHA, 2022 Grove St., Baldwin, NY 11510

*All members are entitled to three free classified ads of 15 words or less per membership year. All ads must be received no later than the 15th of the preceding month to be included in the next months Newsletter. Sorry no telephone ads can be accepted.*

Horse Property Beautiful Smithtown Pines renovated col. next to Blydenburgh Park, all amenities. Owner 631-366-4929.

They're back 1st quality leather halters \$22 ea 2 for \$40 also Amish made garden/muck carts \$150 better than a wheelbarrow many saddles avail. Jerry Trapani 1-917-355-5225.

DOG TRAINER: basic training and/or behavior modification. Specializing in problems of dominance, aggression, separation anxiety, barking and other

unwanted habits. References available. Call Mindy Meiselman-Mylett at 516-489-4555.

Half boarder wanted: 17.0 warmblood gelding. Boarded on Connetquot park in new barn. Experienced rider. Good in ring or park. More information, call Sue Sobel 631-563-9220.

For Sale. Heartbroken, 15 Yr 15.3 Paint Eng/West, Perfect keeper. sound, no vices, affectionate \$3,500 Neg. 516-417-4585



#### FOXFIELD FARM'S "SIMON"

*Classic 10" Jack Russell Terrier  
Outstanding Temperment  
Puppies Available*

Sue Sobel

Bohemia, New York  
631-563-9220  
631-445-7897  
[foxfieldfarm1@aol.com](mailto:foxfieldfarm1@aol.com)

Stall on Connetquot Park 10 x 10 box in 5 stall center aisle barn. Individual menu and TLC. All day turnout. Experienced horse people. Right on the park with no riding on the street at all. Full Board \$500.00. Call 631 581-2207 cell 516 551-0528



#### MEADOWBROOK TERRIERS

*Classic 10" Jack Russell Terriers  
Breeding Top Bloodlines since 1983*

Frank & Patti Bradford

2022 Grove Street  
Baldwin, NY 11510  
516-378-1587  
[www.meadowbrookterriers.com](http://www.meadowbrookterriers.com)

Equine Retirement Facility in the beautiful Appalachians on the Greenbrier River Trail. Overnight stays welcome. 24 hour turnout w/run-in sheds. Stalls available. \$150 per month. See [www.wannabefarm.com](http://www.wannabefarm.com).

## CALENDAR

### AUGUST

**20 SUN** NSHA Horse Show Old Field Farm Call 631-696-4019.

### SEPTEMBER

**24 SUN** NSHA/MHA Open House, Muttontown Preserve 9:30 - 3PM Rain or shine. See flyer in this issue for additional information.

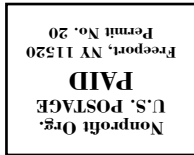
### OCTOBER

**5-9 THU-MON** Long Island Fair, Old Bethpage Village Restoration. Daily NSHA Rough Rider Cavalry Demonstrations and Encampment.

The Long Island Fair - Long Island's own country fair. Complete with livestock, traders, produce competitions, markets, pony and elephant rides, jugglers, and more! Great fun for the whole family. Info 516-572-8400 or [www.oldbethpage.org](http://www.oldbethpage.org).

NSHA Board of Directors usually meets on the first Wednesday of every month at 7:30pm. Call (516) 868-9600 to confirm.

NSHA is a publicly supported federally tax exempt organization formed under the New York State not for profit law. Contributions tax deductible as provided by law.



*Address Service Requested*

Nassau-Suffolk Horsemen's Association, Inc.  
2022 Grove Street  
Baldwin, NY 11510



## Membership Application & Renewal Form

*Membership is tax deductible as allowed by law*

(Please Print)

Name: \_\_\_\_\_

Address: \_\_\_\_\_

City: \_\_\_\_\_ State: \_\_\_\_\_ Zip: \_\_\_\_\_

Phone: (Home) \_\_\_\_\_ (Work) \_\_\_\_\_

Fax: \_\_\_\_\_ Email: \_\_\_\_\_

**Family Membership Only**

List Family Members & Junior Rider's Ages

Name: \_\_\_\_\_

Name: \_\_\_\_\_

Name: \_\_\_\_\_

What other horse organizations do you belong to?

\_\_\_\_\_

\_\_\_\_\_

\_\_\_\_\_

<input type="checkbox"/> New Member		<input type="checkbox"/> Contributing	\$100
<input type="checkbox"/> Individual	\$30	<input type="checkbox"/> Supporting	\$150
<input type="checkbox"/> Family	\$40	<input type="checkbox"/> Patron	\$200
<input type="checkbox"/> Junior (16 yrs & under)	\$15	<input type="checkbox"/> Donation	\$
<input type="checkbox"/> Associate/Business	\$55		

Please send Business Membership Application and/or information about advertising in the newsletter

1. If this is a business membership: \_\_\_\_\_

Name of Business \_\_\_\_\_

Occupation \_\_\_\_\_

2. Do you:

Own How many horses?     Rent/Lease     Share Board

3. Please volunteer for one of these NSHA events or committees?

Advertising     Education     Horse Show     Membership

Swap Night     Open House     Trail Rides     Rough Riders

Parades (both riding and/or assisting Rough Riders)

Other

4. What would you like to see NSHA do for you in the coming year?

\_\_\_\_\_

\_\_\_\_\_

\_\_\_\_\_

(your comments may be printed in newsletter)

In an effort to grow our membership we will be offering a new incentive, a free annual membership to any member who signs up five members who are not renewing members or have not been members for at least one year.

Please complete and mail together with your check or money order made payable to: (membership forms only)

Nassau-Suffolk Horsemen's Association • 639 Bond Court, N. Merrick, NY 11566

Phone (516) 868-9600 • Fax (516) 623-8404